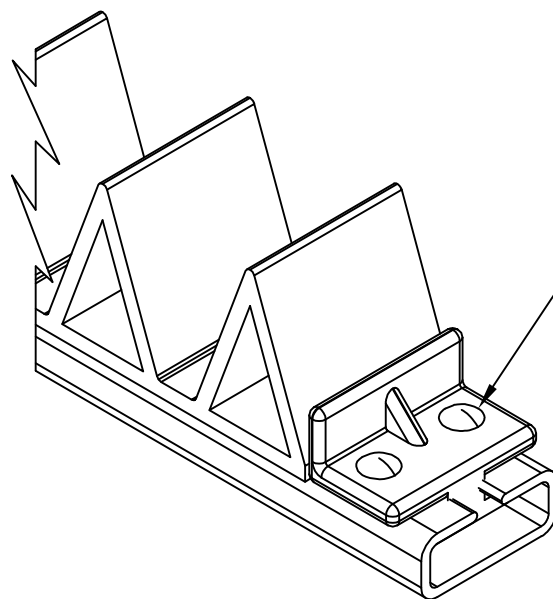
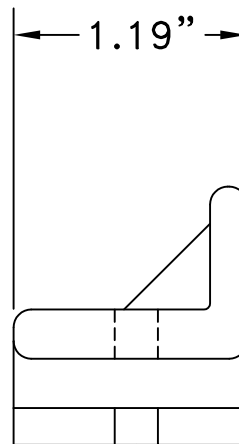
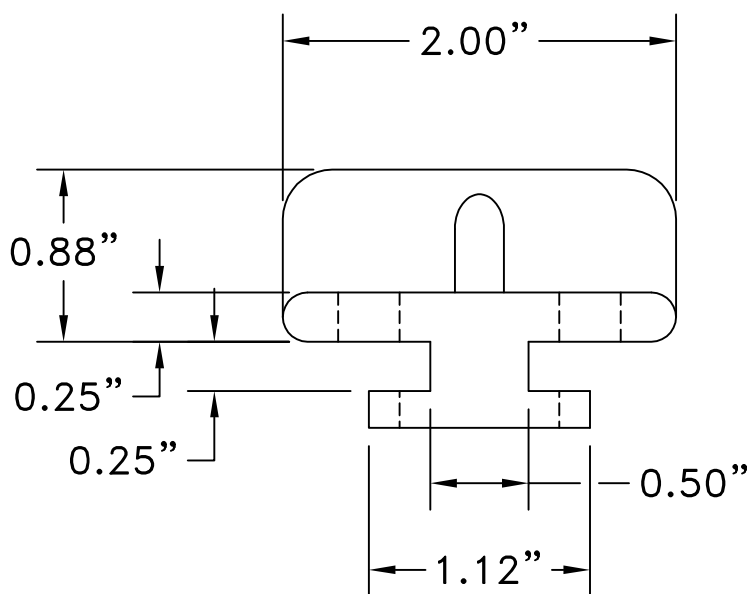
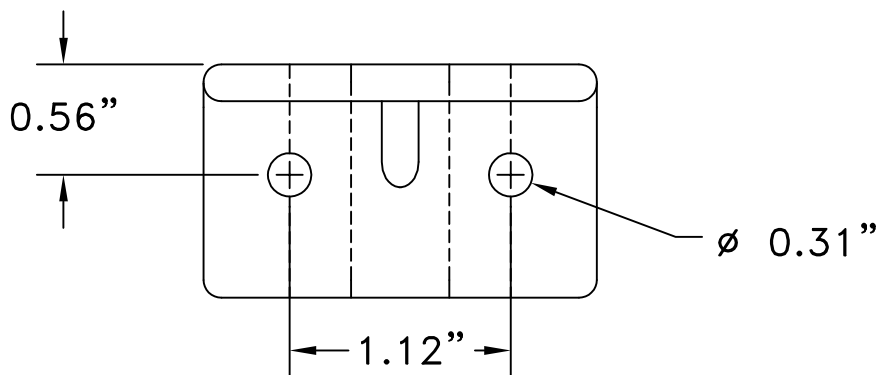


**2" x 2" DUNNAGE STOP  
PART #31770**



POP RIVET

<b>MATERIAL TYPE</b> PC/PBT ALLOY - XENYOY
<b>HARDNESS (SHORE A)</b> N/A
<b>COLOR</b> BLACK

**2" X 2" DUNNAGE STOP  
PART #31770**

Applications:

-Secure dunnage position when loaded into a slotted channel.

**Dunnage  
Engineering**  
Brighton, Michigan

800-443-5553

www.dunnage-eng.com