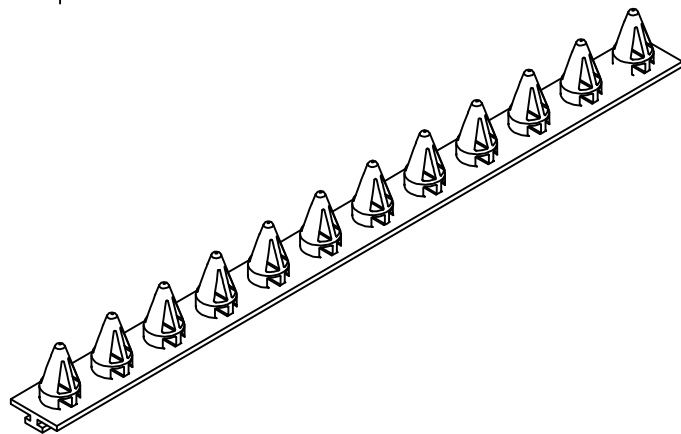
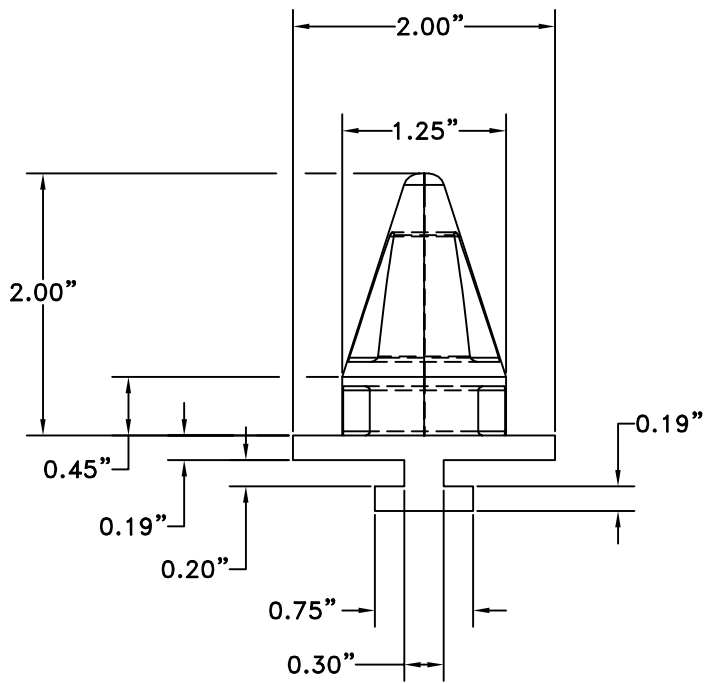
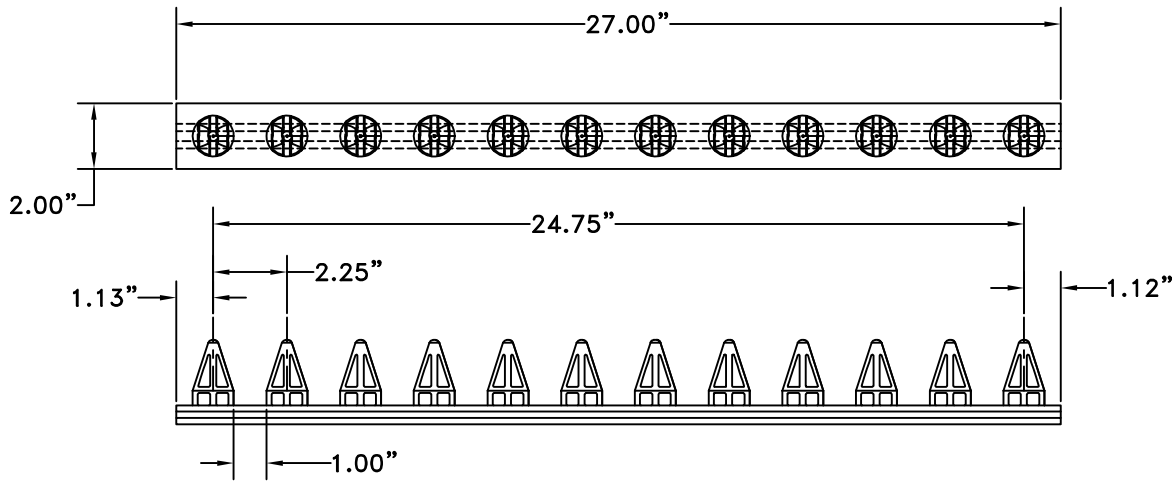


DE-812 CONE DUNNAGE
2.25" INDEX
1.00" POCKET



MATERIAL TYPE Thermoplastic Elastomer (T.P.E.)
HARDNESS (SHORE A) 90. CALL
COLOR GREY, CALL

CONE DUNNAGE

Applications:
 -Side Dunnage - Curved Panel
 -Universal Dunnage

Dunnage Engineering
 Brighton, Michigan

800-443-5553

www.dunnage-eng.com