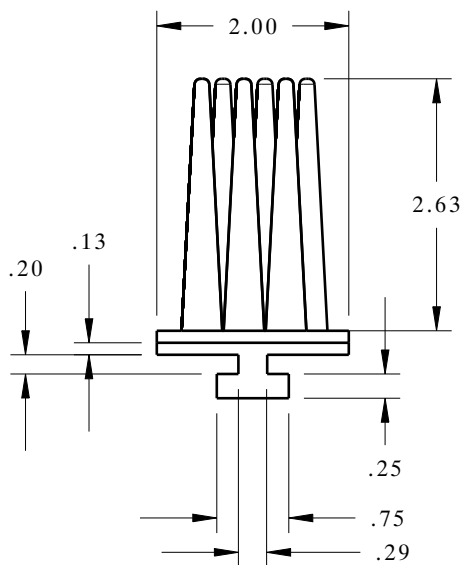
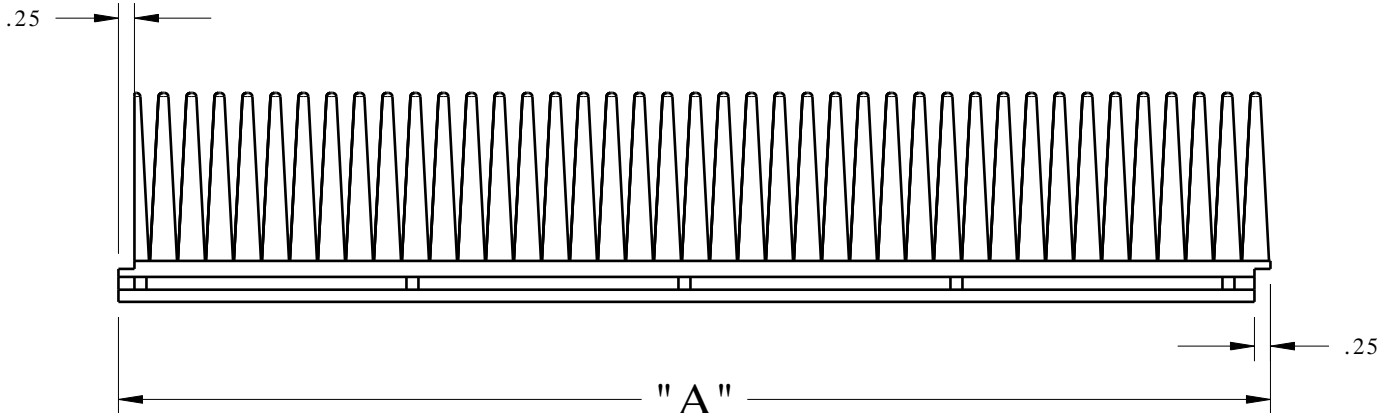
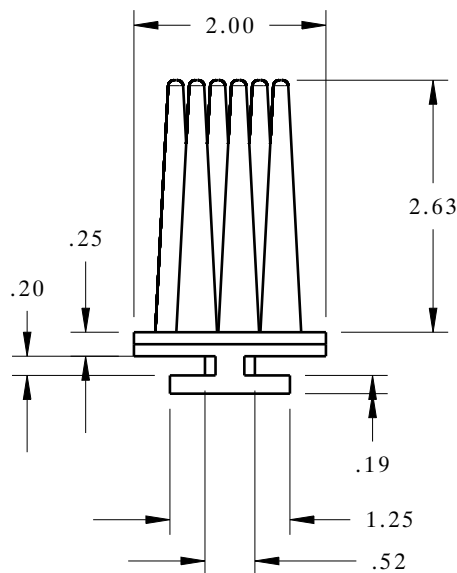


# XL BRUSH DUNNAGE

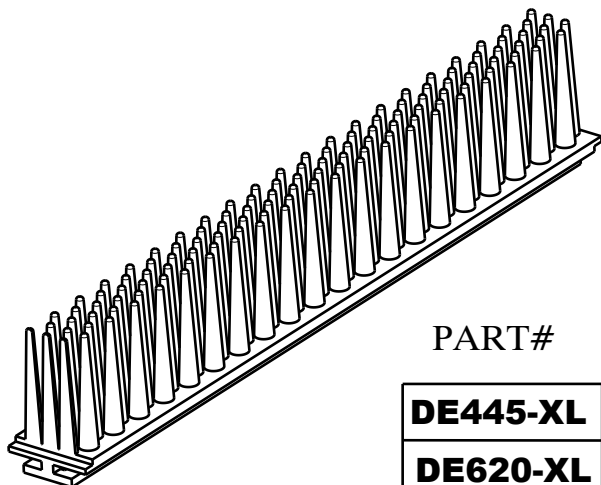


**DE445-XL**



**DE620-XL**

CMHE PART #	DUR
CMHE0088A	70A
CMHE0088B	80A
CMHE0088C	90A



PART#	"A" Length	Fits Slot Size
<b>DE445-XL</b>	26"	.313"
<b>DE620-XL</b>	18"	.625"

**MATERIAL TYPE**  
Thermoplastic Elastomer (TPE)

**HARDNESS (SHORE A)**  
70 (Soft) , 80, 90

**COLOR**  
Grey (Stock) , Black, Call

## XL BRUSH DUNNAGE (2.625")

**Applications:**

- Generic part spacing
- Captures part flange



800-443-5553

www.dunnage-eng.com