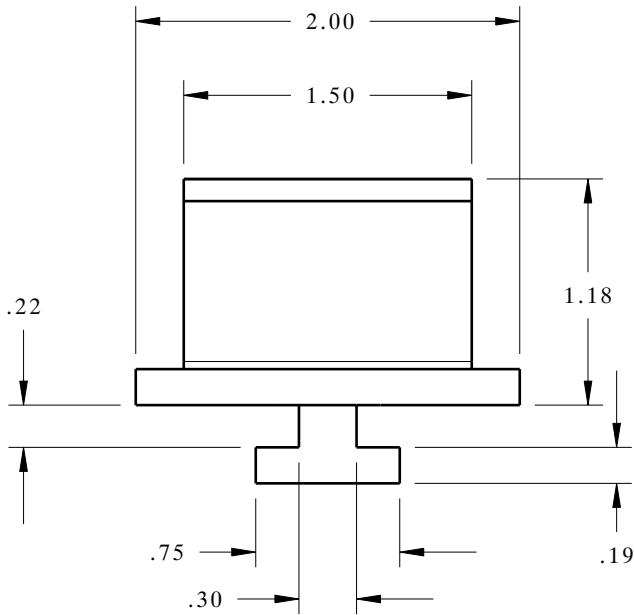
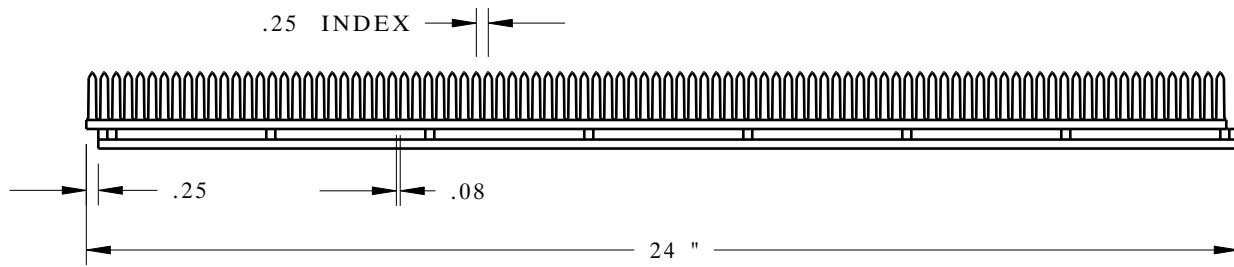
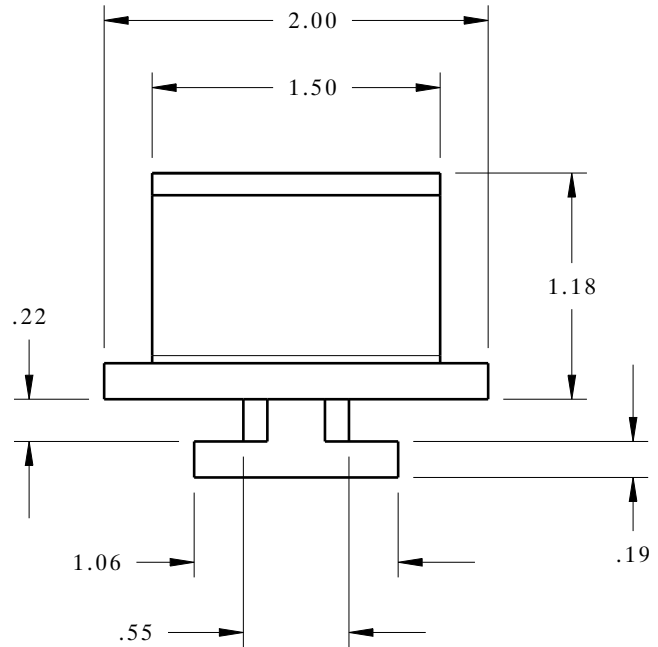


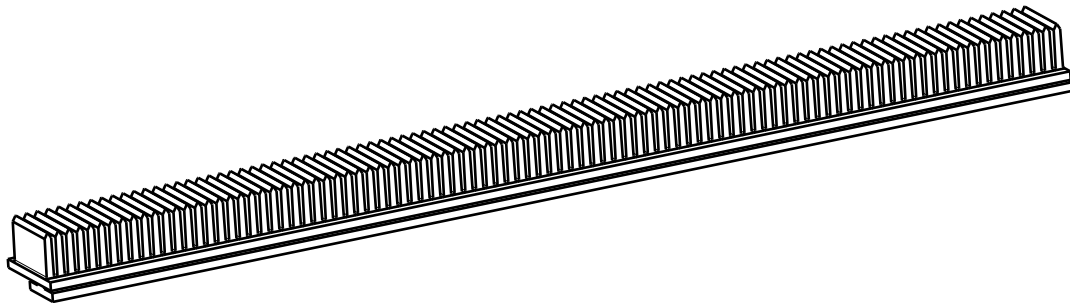
COMB DUNNAGE



TRK-A



TRK-E



Typical uses:

1. Swing arm (close off) dunnage
2. Cantilever arm dunnage
3. Sheet Metal panel dunnage
4. Glass panel dunnage

NOTE: All Dimensions are in INCHES

MATERIAL TYPE Thermoplastic Elastomer (TPE)
HARDNESS (SHORE A) 70 (Soft) , 80, 90
COLOR Grey (Stock) , Black, Call

COMB DUNNAGE

- Applications:
- Generic close off
 - Captures part flange



800-443-5553

www.dunnage-eng.com