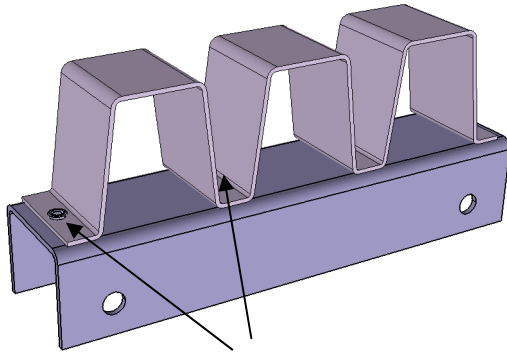
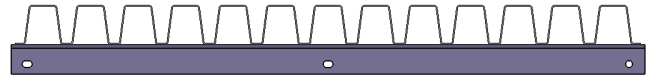
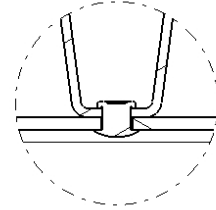


## Attachment Options for Formed Steel Separators



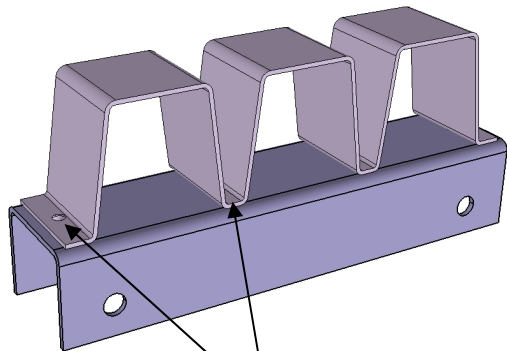
Rivets located in each pocket and end tabs.

### Semi-tubular rivet option



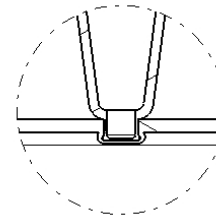
Section view of rivet in pocket

- Curled side of rivet is located in center of pocket and creates a slightly elevated feature (rivet head located under substrate).
- Pocket width must be 0.63" (16mm) or wider for rivet option.
- Rivet option can be used for attachment to channels, hat-sections and T-track retainers (for insertion into C-channel dunnage bars).



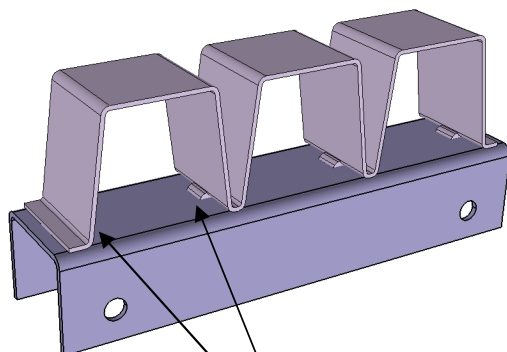
Attachment points are located in each pocket and end tabs.

### Tog-L-Loc attachment option



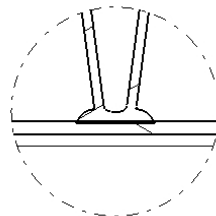
Section view of attachment point in pocket

- Best option if the presence of the curled side of a rivet within the pocket is not acceptable for the application. Only a flat depression is located at the attachment point.
- Pocket width must be 0.31" (8mm) or wider for tog-l-loc option.
- This option cannot be used to attach a formed strip to a t-track retainer. The formed strip and substrate must be common materials.



Attachment points are located within the "hump", outside the pocket area.

### Tack welding attachment option



Section view of attachment point

- Used for applications when pockets are more narrow than 0.31" (8mm) or when substrate material is different than formed strip and rivet option is not suitable.
- 0.5" (13mm) tack weld on either side of pocket