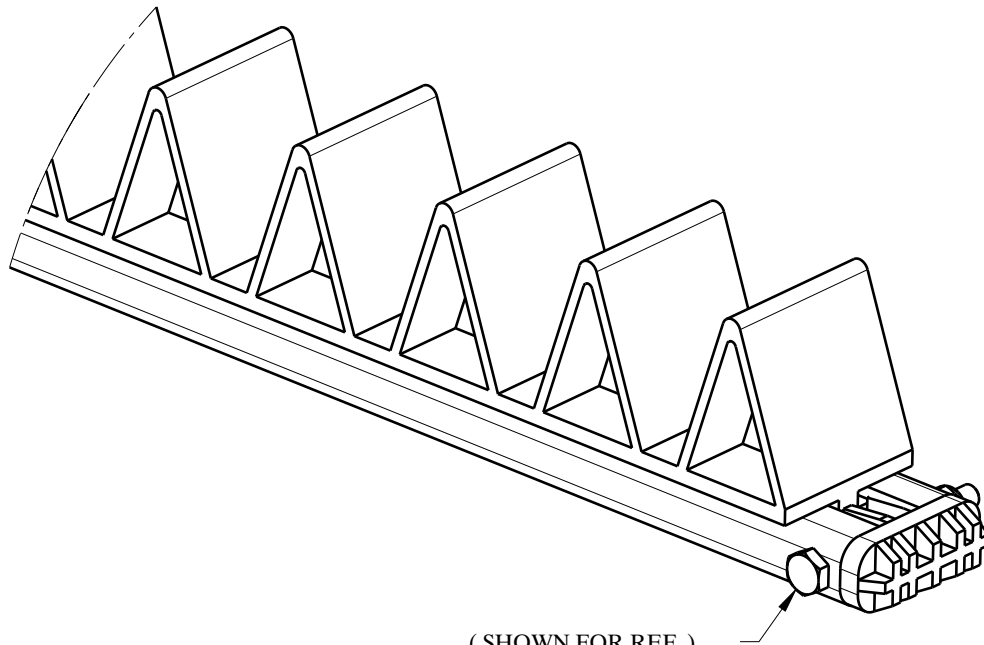
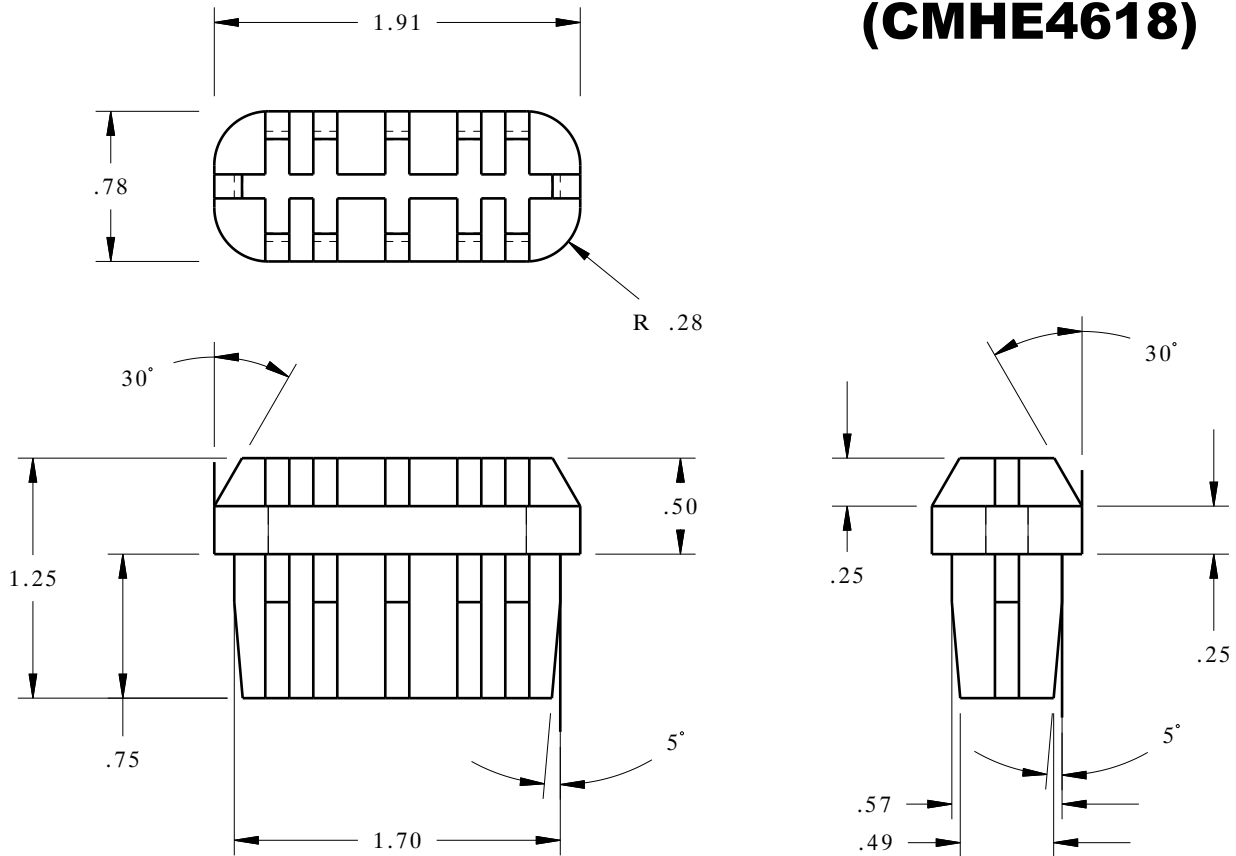


DE1132 C-CHANNEL END CAP (CMHE4618)



(SHOWN FOR REF.)
PROVIDE HOLES FOR
.25 DIA. BOLT ASSEMBLY
TO SECURE END CAP

MATERIAL TYPE
Thermoplastic Elastomer (TPE)

HARDNESS
90A

COLOR
Black

C-CHANNEL END CAP

Applications: Secure T-track
Dunnage at end of
C-Channel



800-443-5553

www.dunnage-eng.com