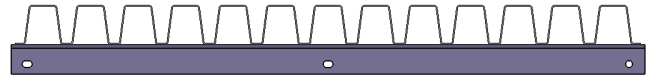
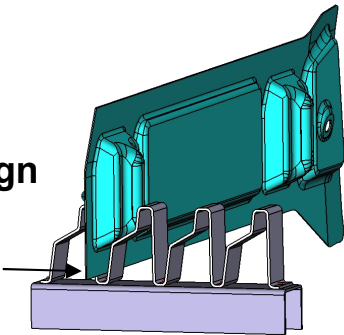


Pocket Design Guide for Formed Steel Separators

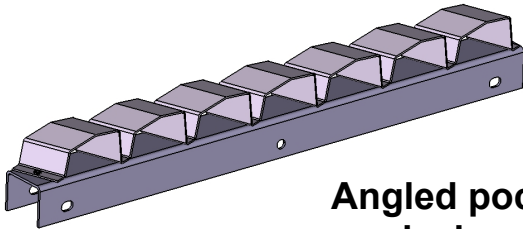
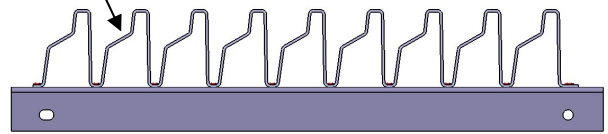


Stepped Pocket Design

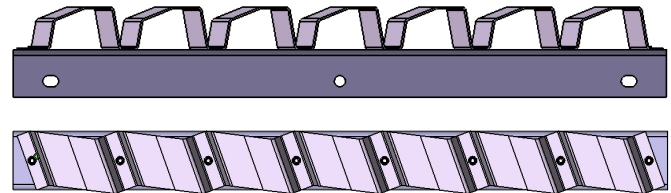
Protects edge of panel from damage due weight of part transferring through the flange.



Panel rests on bump-out instead of the bottom of the pocket.



Angled pocket designs

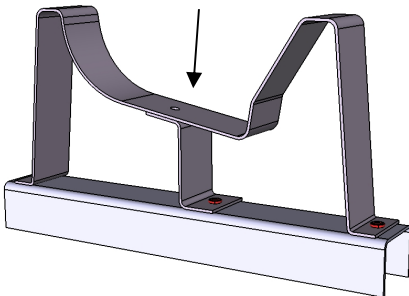


Approximate angle degree limitations

Width of strip	Maximum angle
Less than 2" (50mm)	40 degree
2" to 4" (50mm – 100mm)	30 degree
4" to 6" (100mm – 150mm)	20 degree

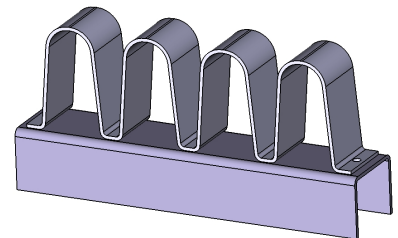
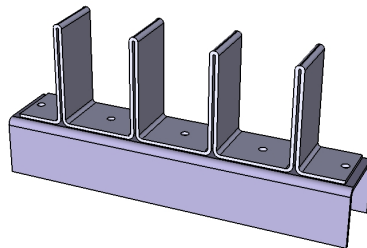
Note: As a general rule, thinner steel and less complicated form shapes will allow for greater pocket angles.

Pocket supported by a Z-Bracket



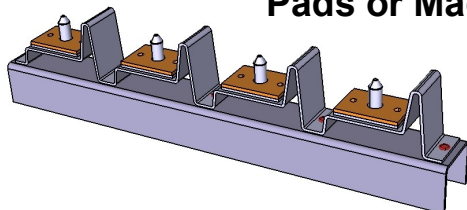
Support Bracket Design

Back-to-Back Form Design



Curved Pocket and Hump Elements

Added VCS Cushion Pads or Machined Pins



Floating Pockets

