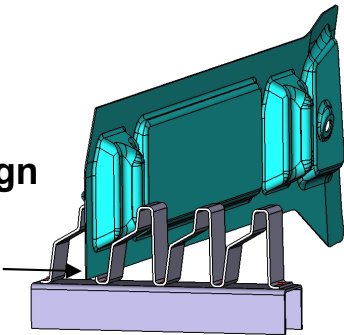


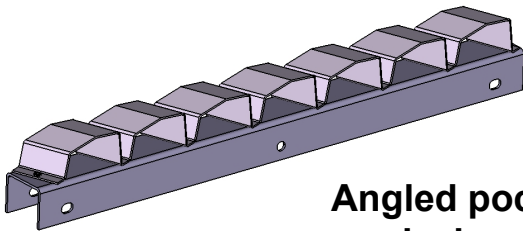
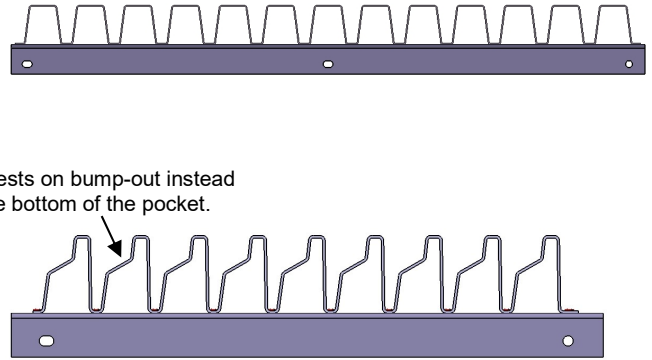
Pocket Design Guide for Formed Steel Separators

Stepped Pocket Design

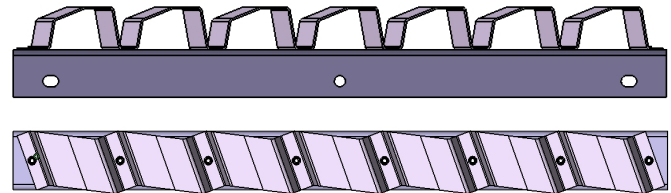
Protects edge of panel from damage due weight of part transferring through the flange.



Panel rests on bump-out instead of the bottom of the pocket.



Angled pocket designs

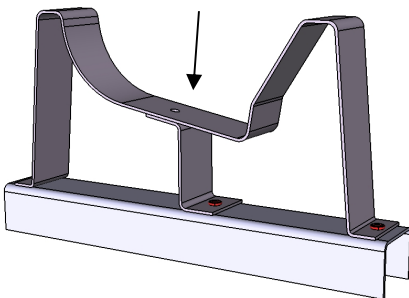


Approximate angle degree limitations

Width of strip	Maximum angle
Less than 2"	40 degree
2" to 4"	30 degree
4" to 6"	20 degree

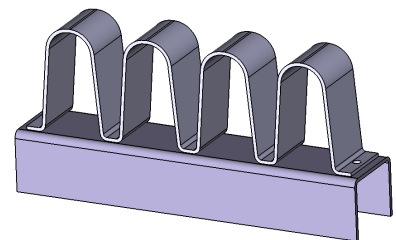
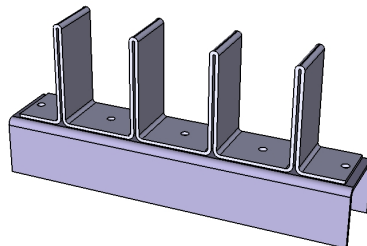
Note: As a general rule, thinner steel and less complicated form shapes will allow for greater pocket angles.

Pocket supported by a Z-Bracket



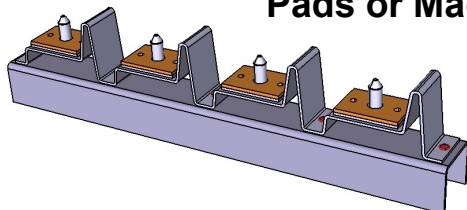
Support Bracket Design

Back-to-Back Form Design



Curved Pocket and Hump Elements

Added VCS Cushion Pads or Machined Pins



Floating Pockets

