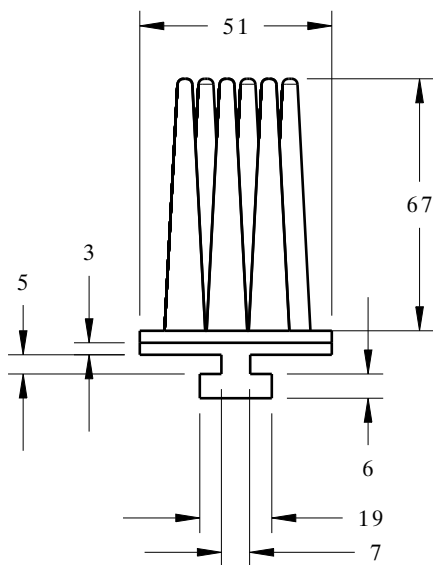
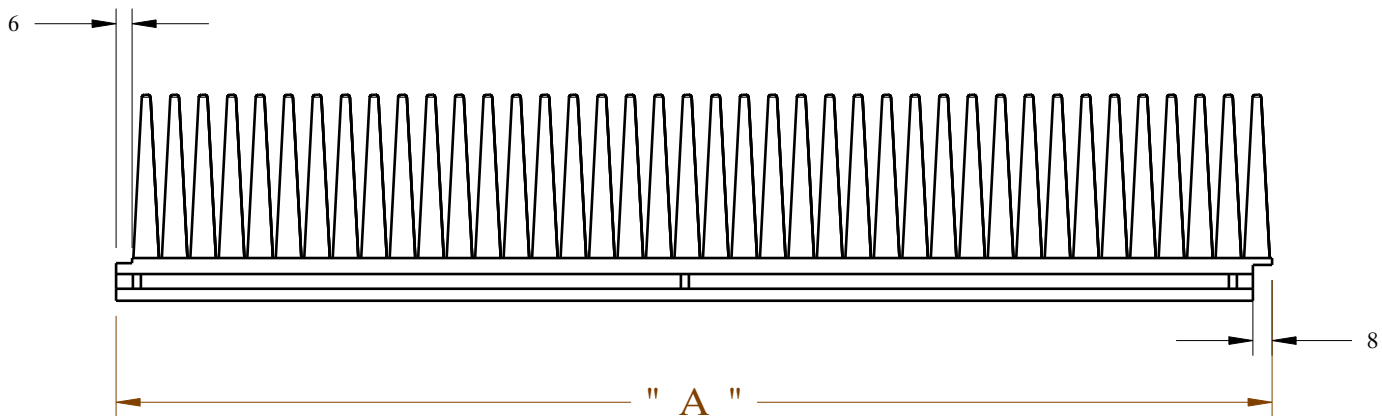
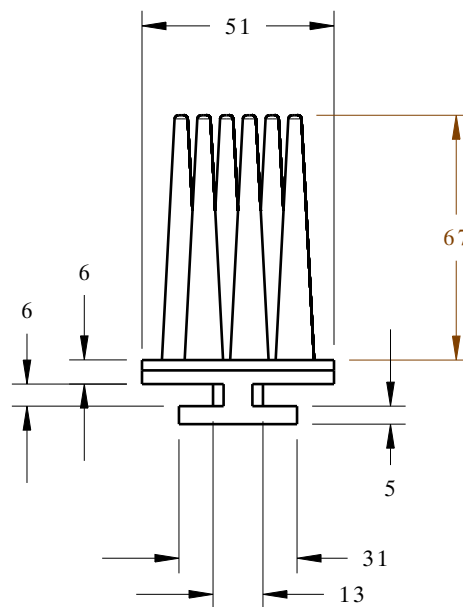


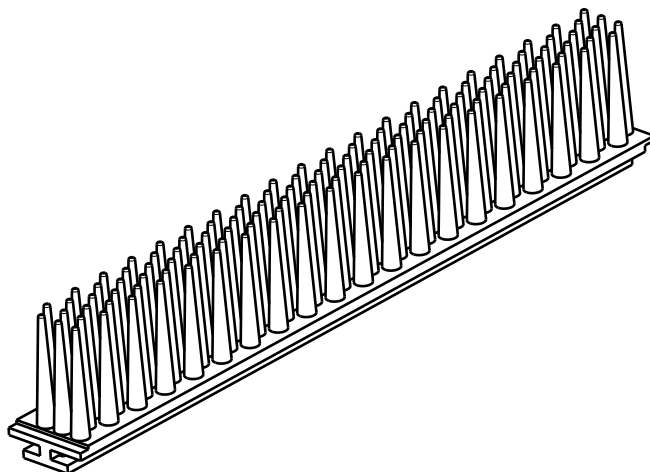
XL BRUSH DUNNAGE



DE445-XL



DE620-XL



PART#	"A" Length	Fits Slot Size
-------	------------	----------------

DE445-XL	660	8
DE620-XL	457	16

NOTE: All Dimensions are in Millimeters

MATERIAL TYPE Thermoplastic Elastomer (TPE)
HARDNESS (SHORE A) 70 (Soft) , 80, 90
COLOR Grey (Stock) , Black, Call

XL BRUSH DUNNAGE (66.7)

Applications:

- Generic part spacing
- Captures part flange



800-443-5553

www.dunnage-eng.com